

# Flying Insect Management

PROFESSIONAL STICKY TRAPS

PROFESSIONAL ELECTRONIC STICKY TRAPS

ELECTRONIC FLY KILLERS (EFKS)

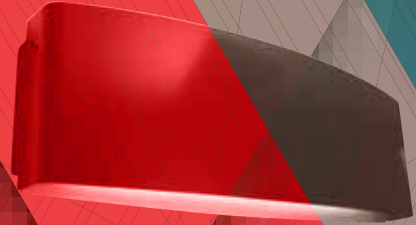
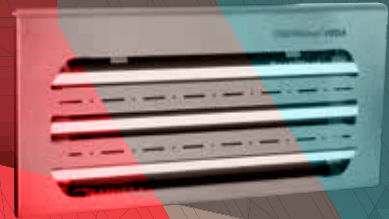
DECORATIVE AND COMMERCIAL STICKY TRAPS

SPECIALIST RANGE

ANCILLARY PRODUCTS

HINTS, PRODUCT SPECIFICATIONS & PRODUCT SELECTION GUIDE

FLY IDENTIFICATION

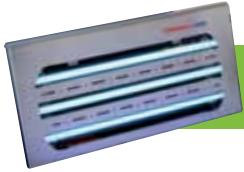


CELEBRATING

★ ★ ★ ★ ★  
**25**  
YEARS  
**2016**



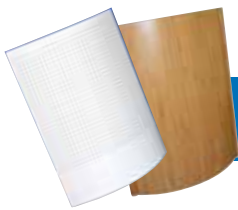
**Professional Sticky Traps**



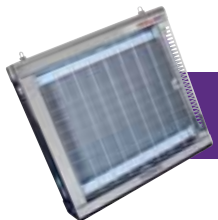
**Professional Electronic Sticky Traps**



**Electronic Fly Killers (EFKs)**



**Decorative and Commercial Sticky Traps**



**Specialist Range**



**Ancillary Products**



**Hints, Product Specifications & Product Selection Guide**



**Fly Identification**

*Flies spread disease and suffering...  
...control them with PestWest*

CELEBRATING  
**25**  
YEARS  
**2016**

## INTRODUCTION

Innovation, quality and power are key components in any PestWest unit. Combining excellent value with expertise from technicians and leading biologists, PestWest offer a diverse range of professional and specialist Electric Fly Killers.

By merging science with technology, PestWest units are designed to the highest specification whilst always keeping the end user in mind, saving you time and money.

PestWest are passionate about flying insect control, guaranteeing that you receive the very best units built to the highest specification.

PestWest is the proud holder of the Queen's Award for Enterprise: International Trade 2004, the holder of regional and national awards for export sales and is the winner of the UK award for Best Use of Education and Training. It prides itself on manufacturing high quality, reliable and innovative products which incorporate unique design features.

**ALL PESTWEST UNITS ARE CE MARKED AND CARRY THE REQUIRED EUROPEAN APPROVALS.  
ALL MODELS COME WITH A 3-YEAR GUARANTEE (EXCLUDING CONSUMABLES).  
EACH PROFESSIONAL UNIT IS FITTED WITH ENVIRONMENTALLY RESPONSIBLE PESTWEST QUANTUM®  
SHATTERPROOF TUBES.**



**PestWest Electronics Limited, West Yorkshire, United Kingdom**

TEL: +44 (0) 1924 268500 FAX: +44 (0) 1924 273591 EMAIL: [info@pestwest.com](mailto:info@pestwest.com)

[www.pestwest.com](http://www.pestwest.com)

# Professional Sticky Traps

PestWest Professional Sticky Traps are high quality units combining advanced glue board technology with slim-line designs. The slim-line designs enable glue boards to be placed closer to the UV tubes improving catch rates, whilst PestWest Reflectobakt® sleeves shield the board from the drying effect of the UV tubes.

With a PestWest sticky trap the insects are secured allowing units to be placed closer to sensitive areas. They do not have an electric killing grid making them silent, discreet and hygienic whilst catching all sizes of insects including smaller species such as Fruit Flies.

## All units feature:

- Quantum shatter resistant tubes coated with industry compliant FEP for maximum attraction and significantly reduced risk of contamination from glass breakages.
- Full-size sticky board to effectively catch even the smallest flies.
- Easy to remove bottom tray, drop-down guard and front covers - no tool service.
- Reflectobakt® sleeves increase attractiveness to insects, significantly slow the drying of the sticky board and allow longer board life and slimmer design.
- Interchangeable tubes and sticky boards on all units to minimise stocking requirements.
- All metal construction means longer lasting models for years of reliable service.

## Chameleon<sup>®</sup> 1x2 DISCRETION

Discreet and slim wall-mounted unit (free-standing bracket available). An attractive front cover conceals the sticky board and catch, which makes this unit ideal for areas in view of the public.

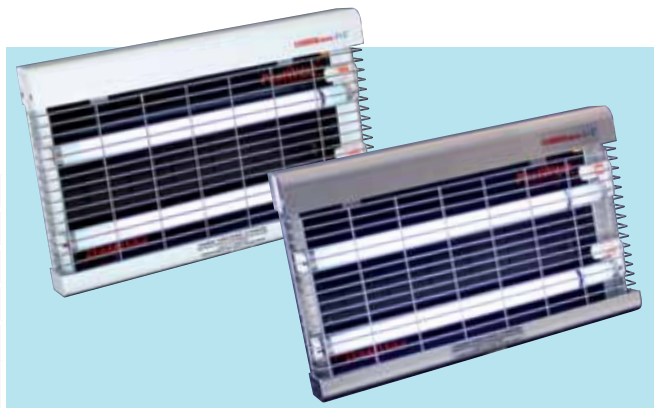
<b>Dimensions</b>	H: 31.5cm W: 48.5cm D: 6.5cm
<b>Weight</b>	4.3kg
<b>Coverage</b>	Wall mounted / Freestanding: 70m <sup>2</sup>
<b>Finish</b>	White <input type="checkbox"/> Stainless Steel <input type="checkbox"/>
<b>Tube Data</b>	<ul style="list-style-type: none"> <li>• 2 x 15-Watt PestWest Quantum tubes</li> <li>• Shatterproof coating with industry compliant FEP</li> <li>• Reflectobakt® technology</li> </ul>



## Chameleon<sup>®</sup> 1x2

Attractive, slim, wall-mounted (free standing bracket available), compact and unobtrusive, this unit is ideal for use in food preparation areas.

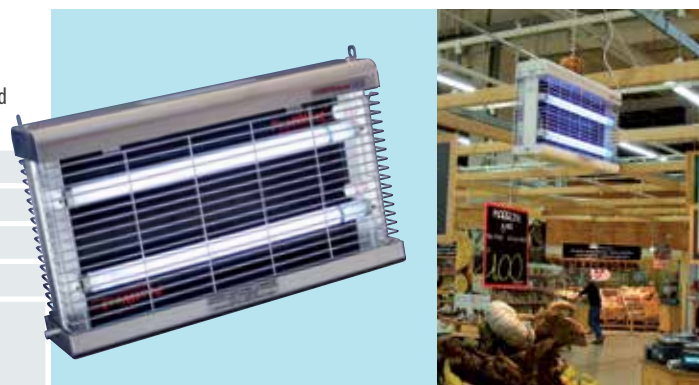
<b>Dimensions</b>	H: 31.5cm W: 48.5cm D: 6.5cm
<b>Weight</b>	4.3kg
<b>Coverage</b>	Wall mounted / Freestanding: 90m <sup>2</sup>
<b>Finish</b>	White <input type="checkbox"/> Stainless Steel <input type="checkbox"/>
<b>Tube Data</b>	<ul style="list-style-type: none"> <li>• 2 x 15-Watt PestWest Quantum tubes</li> <li>• Shatterproof coating with industry compliant FEP</li> <li>• Reflectobakt® technology</li> </ul>



## Chameleon<sup>®</sup> 2x2

Designed to be ceiling-suspended, this model provides 360° attraction and is ideal for industrial and commercial food premises.

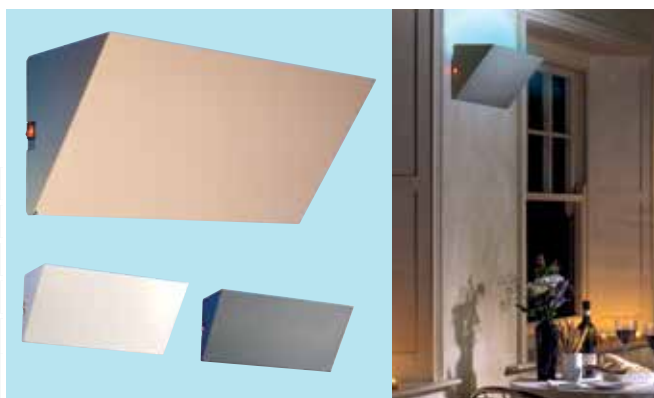
<b>Dimensions</b>	H: 31.5cm W: 48.5cm D: 12.5cm
<b>Weight</b>	6kg
<b>Coverage</b>	Ceiling-suspended / Freestanding: 180m <sup>2</sup>
<b>Finish</b>	White <input type="checkbox"/> Stainless Steel <input type="checkbox"/>
<b>Tube Data</b>	<ul style="list-style-type: none"> <li>• 4 x 15-Watt PestWest Quantum tubes</li> <li>• Shatterproof coating with industry compliant FEP</li> <li>• Reflectobakt® technology</li> </ul>



## Chameleon<sup>®</sup> Uplight

Attractive wall-mounted unit disguised as a wall light. It is the perfect choice for areas where fly control should be discreet, e.g. restaurants and other eating areas.

<b>Dimensions</b>	H: 21cm W: 47cm D: 17cm
<b>Weight</b>	3.7kg
<b>Coverage</b>	Wall mounted: 40m <sup>2</sup>
<b>Finish</b>	White <input type="checkbox"/> Silver <input type="checkbox"/> Magnolia <input type="checkbox"/>
<b>Tube Data</b>	<ul style="list-style-type: none"> <li>• 1 x 15-Watt PestWest Quantum tube</li> <li>• Shatterproof coating with industry compliant FEP</li> </ul>



# Professional Electronic Sticky Traps

This new range of environmentally responsible models offers innovative designs with highly efficient yet discreet fly control. All models feature an electronic ballast and unique 14 Watt T5 tubes, which are on the cutting edge of energy efficient lighting technology. Flying insects are discreetly trapped on standard Chameleon® range glue boards placed behind decorative front covers.

**Higher performance | Lower consumption | Reduced glass and mercury content**



## Chameleon® VEGA

The Chameleon® Vega is powerful, stylish and economical. Its elegant and ultra-slim design based on revolutionary new technology combined with an all stainless steel or white all metal construction will suit most environments. It features new higher energy efficient UVA tubes with Reflectobakt® technology powered by a state of the art electronic ballast to deliver efficient fly control with low running costs.

The slimness and style of the Chameleon® Vega is achieved thanks to the latest generation of UVA tubes, which offers improved UVA performance as well as a reduction in glass content. The absence of starters and the unique self-holding mechanism of the front guard contribute to the overall ease and speed of servicing.

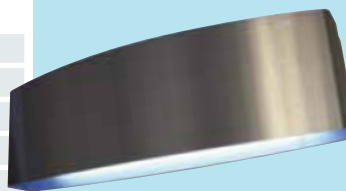
<b>Dimensions</b>	H: 30cm W: 57.5cm D: 4cm
<b>Weight</b>	3.2kg
<b>Coverage</b>	Wall mounted: 150m <sup>2</sup>
<b>Finish</b>	<input type="checkbox"/> White <input type="checkbox"/> Stainless Steel
<b>Tube Data</b>	<ul style="list-style-type: none"> <li>• 3 x 14-Watt T5 PestWest Quantum tubes</li> <li>• Shatterproof coating with industry compliant FEP</li> <li>• Reflectobakt® technology</li> <li>• Powered by an electronic ballast</li> </ul>



## Chameleon® SIRIUS

The Chameleon® Sirius is a sophisticated new unit designed for front-of-house use. With its clean curves, a choice of finish and dual wall mounting options, it fits seamlessly into any restaurant, café or hotel. It features unique UVA tubes powered by an electronic ballast to deliver professional and environmentally responsible fly control.

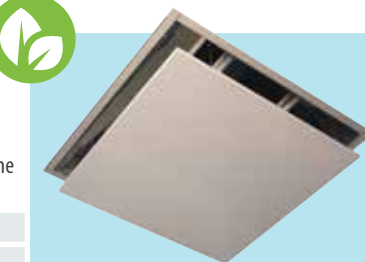
<b>Dimensions</b>	H: 19cm W: 58cm D: 12cm
<b>Weight</b>	2.7kg
<b>Coverage</b>	Wall mounted: 60m <sup>2</sup>
<b>Finish</b>	<input type="checkbox"/> Stainless Steel <input type="checkbox"/> White <input type="checkbox"/> Anthracite
<b>Tube Data</b>	<ul style="list-style-type: none"> <li>• 2 x 14-Watt T5 PestWest Quantum tubes</li> <li>• Shatterproof coating with industry compliant FEP</li> <li>• Powered by an electronic ballast</li> </ul>



## ON-TOP PRO ON-TOP PRO2

Innovative, discreet and stylish fly trap; this unique overhead design fits discreetly and easily into new or existing suspended-ceilings. Ideal for convenience stores, supermarkets and areas where space limitations may have previously made situating a standard unit difficult. The patented design avoids the possibility of fly fall-out and will efficiently control infestations in public spaces.

<b>Dimensions</b>	H: 59cm W: 59cm D: 13cm
<b>Weight</b>	6kg
<b>Coverage</b>	Ceiling-fitted: 50m <sup>2</sup>
<b>Finish</b>	<input type="checkbox"/> Zintec steel body with white painted aluminium cover tray <input type="checkbox"/> Zintec steel body with stainless steel cover tray
<b>Tube Data</b>	<ul style="list-style-type: none"> <li>• 2 x 14-Watt T5 PestWest Quantum tubes</li> <li>• Shatterproof coating with industry compliant FEP</li> <li>• Powered by an electronic ballast</li> </ul>



# Electronic Fly Killers (EFKs)

The Electronic Fly Killers use powerful PestWest Quantum tubes to attract flying insects onto a high voltage killing grid to eradicate them. The insects subsequently fall into a catch-tray. PestWest has been developing world leading EFKs for over 20 years. They are designed with both the professional technician and the end-user in mind. They combine robust and powerful designs with tool-free maintenance and a choice of either wall-mounted, ceiling-suspended or freestanding options.

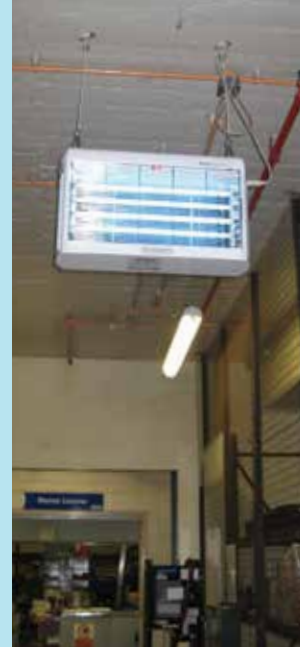
## Nemesis<sup>®</sup> QUATTRO

This all-metal electronic fly killer combines robustness and power with energy-efficient and environmentally responsible technology making it the ideal choice for large open industrial areas. It features new higher energy efficient UVA tubes powered by a state of the art electronic ballast for optimum fly control performance with low running costs and reduced materials (glass & mercury).

### Additional features:

- Unique transformer - minimises shattering of insects
- Front guard lockable in open position - facilitates servicing
- 'Power-on' and 'grid-on' warning lights - inspection at a distance
- Spring-loaded removable killing grid - easy cleaning
- Choice of mounting option - ease of placement

<b>Dimensions</b>	H: 42cm W: 65cm D: 18cm
<b>Weight</b>	12kg
<b>Coverage</b>	Wall mounted: 240m <sup>2</sup> Ceiling-suspended: 480m <sup>2</sup>
<b>Finish</b>	<input type="checkbox"/> White <input type="checkbox"/> Stainless Steel
<b>Tube Data</b>	<ul style="list-style-type: none"> <li>• 4 x 14-Watt T5 PestWest Quantum tubes</li> <li>• Shatterproof coating with industry compliant FEP</li> <li>• Powered by an electronic ballast</li> </ul>



## TITAN<sup>300</sup>

With a wrap-around chrome guard giving 360° protection, this all-metal unit offers features and performance far beyond its price. It is ideal for larger kitchens, shops, cafés and all commercial uses. It can be adapted to operate as a cluster fly unit by removing the tray.

<b>Dimensions</b>	H: 33cm W: 49.5cm D: 13.5cm
<b>Weight</b>	7.5kg
<b>Coverage</b>	Wall mounted: 90m <sup>2</sup> Ceiling-suspended / Freestanding: 180m <sup>2</sup>
<b>Finish</b>	<input type="checkbox"/> White <input type="checkbox"/> Stainless Steel
<b>Tube Data</b>	<ul style="list-style-type: none"> <li>• 2 x 15-Watt PestWest Quantum tubes</li> <li>• Shatterproof coating with industry compliant FEP</li> </ul>



## TITAN<sup>®</sup> ALPHA

This powerful yet compact model is ideal for shops, kitchens, cafés, take-away outlets and even domestic use.

<b>Dimensions</b>	H: 30.5cm W: 35cm D: 15cm
<b>Weight</b>	4kg
<b>Coverage</b>	Wall mounted: 80m <sup>2</sup> Ceiling-suspended / Freestanding: 160m <sup>2</sup>
<b>Finish</b>	<input type="checkbox"/> White
<b>Tube Data</b>	• 2 x 15-Watt 12" long PestWest Quantum tubes



# Decorative and Commercial Sticky Traps

The decorative and commercial sticky trap units have been designed specifically for areas where fly control should be hidden from view, with decorative and unique front covers that hide the glue board and insect catch. The brand new Sunburst TAB broadens the range to offer a suitable choice for both front and back of house.



Designed for front-of-house areas where fly control should be hidden from view, its elegant and decorative design conceals the glue board and the insects caught. Discreet, stylish and environmentally responsible, the Sunburst is ideal for hotels, restaurants, bars, and retail shops. This all metal unit can be placed on a tabletop or mounted on the wall.

<b>Dimensions</b>	H: 31cm W: 23cm D: 10cm
<b>Weight</b>	2.5kg
<b>Coverage</b>	Wall mounted / Freestanding: 35m <sup>2</sup>
<b>Finish</b>	<input type="checkbox"/> White <input type="checkbox"/> Silver-grey <input type="checkbox"/> Black
<b>Tube Data</b>	<ul style="list-style-type: none"> <li>• 1 x 20-Watt BL compact tube</li> <li>• Powered by an electronic ballast</li> </ul>



## Naturale

Unique, decorative and discreet sticky board fly trap made of bamboo with a design that is both elegant and natural, making the unit suitable for most front-of-house situations. The discreet design conceals the glue board and the insect catch from view. The use of natural materials and energy-efficient technology allow for an environmentally sustainable fly control. The Sunburst Naturale can be used wall-mounted or freestanding and is ideal for hotels, restaurants, bars and shops.

<b>Dimensions</b>	H: 32.5cm W: 25.5cm D: 11.5cm
<b>Weight</b>	2kg
<b>Coverage</b>	Wall mounted / Freestanding: 35m <sup>2</sup>
<b>Finish</b>	<input checked="" type="checkbox"/> Bamboo
<b>Tube Data</b>	<ul style="list-style-type: none"> <li>• 1 x 20-Watt BL compact tube</li> <li>• Powered by an electronic ballast</li> </ul>



## SUNBURST TAB

The Sunburst<sup>®</sup> TAB is the latest addition to the Sunburst range. It is destined for catering outlets in both front and back-of-house areas thanks to its concealed fly catch behind a brushed stainless steel cover. Versatile, it can be wall-mounted vertically and horizontally or suspended from the ceiling. A high quality 24 Watt compact tube powered by an electronic ballast and backed by an aluminium reflector ensures optimum fly control and reduced electricity costs.

<b>Dimensions</b>	H: 25.5cm W: 42.5cm D: 10cm
<b>Weight</b>	1.2kg
<b>Coverage</b>	Wall mounted / Ceiling-suspended: 50m <sup>2</sup>
<b>Finish</b>	<input checked="" type="checkbox"/> Stainless Steel
<b>Tube Data</b>	<ul style="list-style-type: none"> <li>• 24 Watt compact tube</li> <li>• Powered by an electronic ballast</li> </ul>



# Specialist Range

PestWest's specialist range provides special safety features such as high IP ratings and flameproof electrical enclosures giving you protection against the most hazardous and potentially dangerous areas.

The units are built to the highest possible specifications and accredited to the ultimate safety certification for electrical equipment. This means that sensitive and often highly dangerous areas (ATEX classified zones) can be protected without compromising safety standards or insurance requirements.

## Chameleon® EXG

This custom-designed unit has been exclusively engineered to allow protection in areas where gas and vapour are present such as: distilleries and in the petrochemical and pharmaceutical industries. The Chameleon® EXG is made to comply with exacting ATEX standards (ATEX Directives 99/92/EC and 94/9/EC) and is made from the highest quality materials to give a fully corrosion-resistant construction using 304-brushed stainless steel and Marine-grade aluminium alloy. It is suitable for use in zones 2 and 1 - atmospheres where flammable gases/vapours are likely to arise and zones 22 and 21 - atmospheres where combustible dust/powder may be present.

The use of a specific flameproof glass enclosure with excellent UVA light transmission, combined with two large surface area adhesive boards, optimises the fly control unit's efficacy. The adhesive board holders are adjustable allowing installation in confined spaces.

<b>Dimensions</b>	H: 80cm W: 90cm D: 30cm
<b>Weight</b>	14.5kg
<b>Coverage</b>	Wall mounted: 120m <sup>2</sup>
<b>Finish</b>	Stainless Steel and aluminium alloy
<b>Tube Data</b>	<ul style="list-style-type: none"> <li>• 2 x 18-Watt PestWest Quantum tubes</li> <li>• Shatterproof coating with industry compliant FEP</li> <li>• Powered by an electronic ballast</li> </ul>



## Chameleon® 4x4 EX

The Chameleon® 4x4 EX is an ATEX compliant all stainless steel industrial UV fly trap. It is suitable for use in potentially explosive atmospheres in ATEX zone 22 classified areas. Its IP65 rating also allows installation in damp, dusty or corrosive environments. This powerful unit covers large industrial areas trapping even the smallest insects on its double-sided board.

An advanced electronic ballast circuitry reduces the running costs and increases efficiency. The absence of starters and the board easy lateral insertion and withdrawal facilitate servicing.

<b>Dimensions</b>	H: 61.5cm W: 63.5cm D: 16.5cm
<b>Weight</b>	15.5kg
<b>Coverage</b>	Ceiling-suspended: 440m <sup>2</sup>
<b>Finish</b>	Stainless Steel
<b>Tube Data</b>	<ul style="list-style-type: none"> <li>• 4 x 40-Watt PestWest Quantum tubes</li> <li>• Shatterproof coating with industry compliant FEP</li> <li>• Reflectobakt® technology</li> <li>• Powered by an electronic ballast</li> </ul>





## Chameleon<sup>®</sup> 4x4

The Chameleon<sup>®</sup> 4x4 is a powerful high capacity sticky trap, which is particularly suited for large open areas in industrial food premises. An advanced electronic ballast circuitry reduces the running costs and increases efficiency. The absence of starters and the large boards easy lateral insertion and withdrawal facilitate servicing.

<b>Dimensions</b>	H: 61.5cm W: 63.5cm D: 16.5cm
<b>Weight</b>	11.75kg
<b>Coverage</b>	Ceiling-suspended: 440m <sup>2</sup>
<b>Finish</b>	White
<b>Tube Data</b>	<ul style="list-style-type: none"> <li>• 4 x 40-Watt PestWest Quantum tubes</li> <li>• Shatterproof coating with industry compliant FEP</li> <li>• Reflectobakt<sup>®</sup> technology</li> <li>• Powered by an electronic ballast</li> </ul>



## Nemesis<sup>®</sup> QUATTRO IP

The Nemesis Quattro IP24 is an all stainless steel industrial model, which can withstand exposure to high humidity, water splashes and corrosive atmospheres. It is both powerful and energy efficient, featuring new high efficiency UVA tubes powered by a state of the art electronic ballast for optimum fly control performance with low running costs and reduced materials (glass and mercury notably). It is equipped with 'power-on' and high voltage LED indicators, the killing grid is extractable and the front guard can be locked in open position, which all contribute to the overall ease of servicing.

<b>Dimensions</b>	H: 42cm W: 65cm D: 18cm
<b>Weight</b>	12kg
<b>Coverage</b>	Wall mounted: 240m <sup>2</sup> Ceiling-suspended: 480m <sup>2</sup>
<b>Finish</b>	Stainless Steel
<b>Tube Data</b>	<ul style="list-style-type: none"> <li>• 4 x 14-watt T5 PestWest Quantum tubes</li> <li>• Shatterproof coating with industry compliant FEP</li> <li>• Powered by an electronic ballast</li> </ul>



## Chameleon<sup>®</sup> 1x2IP

The Chameleon<sup>®</sup> 1x2IP unit offers advanced fly control for demanding environments and is suitable for areas that are steam-cleaned, hosed down and are damp or corrosive e.g. dairies, abattoirs and industrial kitchens. It is entirely made in stainless steel and IP66 certified.

<b>Dimensions</b>	H: 31cm W: 50cm D: 10cm
<b>Weight</b>	6.1kg
<b>Coverage</b>	Wall mounted: 90m <sup>2</sup>
<b>Finish</b>	Stainless Steel
<b>Tube Data</b>	<ul style="list-style-type: none"> <li>• 2 x 15-Watt PestWest Quantum tubes</li> <li>• Shatterproof coating with industry compliant FEP</li> <li>• Reflectobakt<sup>®</sup> technology</li> </ul>



# Sticky Boards & Reflectobakt® Sleeves

This range of outstanding sticky boards ensures effectiveness and ease of service to provide a difference that sets them apart from the rest. The effectiveness and ease of service of PestWest sticky boards are achieved by using high quality raw materials and a production process that matches the specific features of our UV fly control units.

## STICKY BOARDS WITH A DIFFERENCE!

The PestWest sticky board range features:

- Laminated board construction to eliminate warping and facilitate servicing
- Insect retention and UVA resistance are optimised with a unique hot melt adhesive coating
- Easy to install with a fast release silicon paper that does not affect the glue coating
- Treated card prevents moisture penetration and ensures conformal glue coating for improved insect retention
- Used as part of an IPM programme this comprehensive range includes grey monitoring boards with tabulated grid pattern to facilitate insect counting and identification
- Solvent free glue and use of recycled cardboard reduces environmental impact
- Size optimised to fit a wide range of fly trap models reducing stock requirements
- Long shelf life to minimise stocking issues

PestWest glue board models are designed so the glue boards sit closer to the UV tube than competing models, providing a more rapid catch. This is possible thanks to the introduction of the Reflectobakt® sleeve, which makes the units more effective for longer periods of time.

Reflectobakt® sleeves are featured in all the Chameleon® range of sticky traps, except for the Uplight, Sirius and EXG models.



**Chameleon® Vega**  
An ultra slim unit at 4cm deep

# PestWest Quantum® Shatterproof Tubes

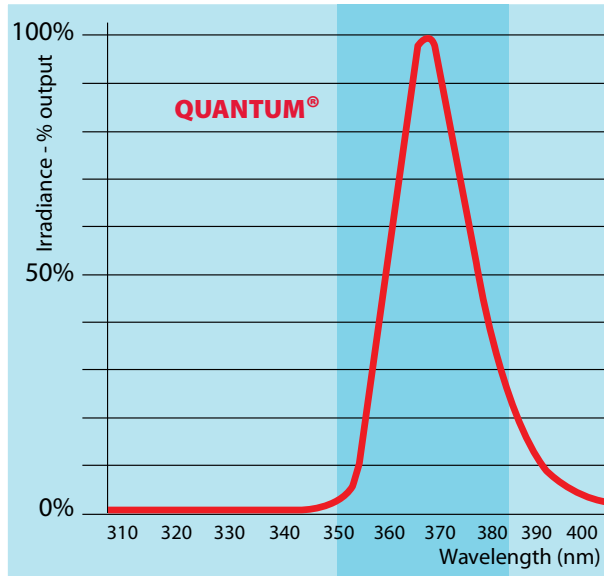
## High Performance and Safety

- 100% European technology
- Higher initial UVA output at 365nm/more durable output
- Industry compliant FEP shatterproof coating: 5% UVA light loss maximum and glass retention under impact to EN 61549
- Environmentally responsible choice: no lead, less mercury
- Tried and trusted brand



## OPTIMISED SPECTRAL DISTRIBUTION

The majority of the UVA light output of Quantum tubes is concentrated in the spectrum between 350-380 nanometers. Extensive scientific research sponsored by PestWest and carried out at the University of Birmingham in the UK proved that this is the most attractive spectrum for urban flies. In 1997 PestWest approached Sylvania Lighting International (SLI) to apply the knowledge obtained from this research and after a 2 year development and trials period the Quantum® tube was born.



## MEETING ENVIRONMENTAL CONCERNS

Quantum tubes meet the most environmentally responsible standards and comply with the requirements of the Restriction of Hazardous Substances (RoHS) legislation, under which the manufacture of BL350 tubes has been banned in Europe for environmental reasons. Quantum tubes are manufactured to the highest quality using the latest water based phosphor technology.

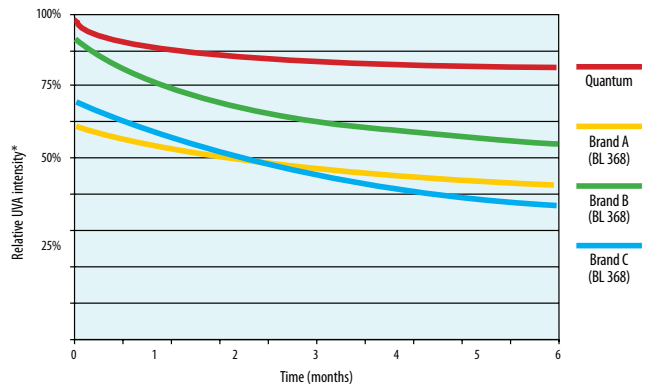


## MAINTAINING HIGH UVA OUTPUT

UVA light emitted from tubes varies greatly depending on the type of phosphors used and the quality of the manufacturing process. The wrong phosphor mix and any lack of quality control leads to very low product performance.

The special phosphor mix used in Quantum tubes and a quality control system to international standards give high initial UVA output while maintaining more UVA light over the tube's lifetime (see graph below). As a result, PestWest Quantum tubes guarantee the user highly effective performance throughout their entire life-span.

### Degradation of UVA output with time



\*measured at 1m in  $\mu\text{W}/\text{cm}^2$  relative to the Quantum tube equalling 100% when new

The study on the UVA light output above compares the PestWest Quantum tubes against several popular generic BL368 UVA tube brands.

## MAXIMUM SAFETY WITH FEP SHATTERPROOF COATING

Not all shatterproof coatings are the same because their quality depends on the material used.

PestWest Quantum shatterproof tubes are coated with a high quality FEP shatterproof coating which has an excellent UVA transmission of around 95%.

The FEP coating also features excellent impact resistance and guaranteed glass retention. It will not melt, flake, discolour nor drip and complies with international standard IEC 61549 for shatterproof tube coatings.

# Ancillary Products

PestWest utilise advanced technology to produce a range of outstanding ancillary products, providing you with the perfect tools to enhance customer satisfaction and loyalty, ensuring you get the very best from your units.

## PestWest UV-AMETER

The UVA Meter uses a series of LED lights to measure UVA light, which is invisible to the human eye. It can quickly and clearly show either:

- The condition and quality of the UV output of the existing tubes in a fly trap, showing whether they are working at peak performance, in need of replacement or beyond useful life. This is particularly important as not all manufacturers' UV tubes maintain adequate performance throughout their one year life and some shatterproof tube coatings will significantly reduce UVA output
- Or as an effective and valuable tool to measure and assess the amount of ambient UV light and to locate the best position for siting of a new UV fly trap

The sturdily constructed UVA Meter is designed with the user in mind. The size of a mobile phone, it can be carried around conveniently and also has a lanyard facility for ease of use when in awkward situations e.g. at the top of ladders.



## HINTS & TIPS

### UV FLY KILLERS

- To maintain maximum effectiveness, tubes should be changed ideally every 6 months, but at least every 12 months, preferably at the onset of warmer weather.
- Quantum tubes are recommended, as their effective lifespan is longer than most other tubes, which reduces the amount of maintenance required.
- Use a UV-A Meter to measure the ultra-violet output of tubes, to give you an instant indication of tube effectiveness and remaining life.
- If the unit requires starters, replace them at the same time that you change the tubes.

### ADDITIONALLY FOR UV STICKY TRAPS

- Use Reflectobakt® sleeves to significantly slow the drying of the sticky board and allow longer board life, which reduces the amount of maintenance required.
- Replace the sticky boards every 2 months to ensure maximum efficacy.

### ADDITIONALLY FOR EFKS

- Use a grid tester to test the killing grid (see picture) without shorting the high tension current onto the metal body of the machine, as often happens when using a conventional screwdriver (unless the unit has a high voltage 'grid-on' indicator like the Nemesis Quattro line).
- Brush down the killing grid (only when it is turned off!) to remove insect fragments.
- Empty the catch tray frequently.



# Quick Reference Guide

All units operate under 220 - 240V, 50/60Hz mains supply  
All models use RoHS compliant UVA tubes peaking at circa 365nm

## PROFESSIONAL STICKY TRAPS

	Power Consumption	Tube Data - PestWest Quantum® BL	Starters (in series type)	Coverage area Wall mounted	Coverage area Ceiling-suspended	Dimensions H x W x D	Weight
Chameleon® 1x2 Discretion	45 Watt	2 x 15 Watt shatterproof 18" / 45cm long / T8	2 x FS22 or S2	70m² freestanding bracket available	n/a	31.5 x 48.5 x 6.5cm	4.3kg
Chameleon® 1x2	45 Watt	2 x 15 Watt shatterproof 18" / 45cm long / T8	2 x FS22 or S2	90m² freestanding bracket available	n/a	31.5 x 48.5 x 6.5cm	4.3kg
Chameleon® 2x2	80 Watt	4 x 15 Watt shatterproof 18" / 45cm long / T8	4 x FS22 or S2	n/a	180m²	31.5 x 48.5 x 12.5cm	6kg
Chameleon® Uplight	25 Watt	1 x 15 Watt shatterproof 18" / 45cm long / T8	1 x FS22 or S2	40m²	n/a	21 x 47 x 17cm	3.7kg

## PROFESSIONAL ELECTRONIC STICKY TRAPS

	Power Consumption	Tube Data - PestWest Quantum® BL	Starters (in series type)	Coverage area Wall mounted	Coverage area Ceiling-fitted	Dimensions H x W x D	Weight
Chameleon® Vega	52 Watt	3 x 14 Watt shatterproof 21" / 53cm long / T5	None	150m²	n/a	30 x 57 x 4cm	3.2kg
Chameleon® Sirius	35 Watt	2 x 14 Watt shatterproof 21" / 53cm long / T5	None	60m²	n/a	19 x 58 x 12cm	2.7kg
ON-TOP PRO	35 Watt	2 x 14 Watt shatterproof 21" / 53cm long / T5	None	n/a	50m²	59 x 59 x 13cm	6kg
ON-TOP PRO 2	35 Watt	2 x 14 Watt shatterproof 21" / 53cm long / T5	None	n/a	50m²	59 x 59 x 13cm	6kg

## ELECTRONIC FLY KILLERS (EFKS)

	Power Consumption	Killing grid output	Tube Data - PestWest Quantum® BL	Starters (in series type)	Coverage area Wall mounted	Coverage area Ceiling-suspended	Dimensions H x W x D	Weight
Nemesis® Quattro	66 Watt	4300V 6.5mA	4 x 14 Watt shatterproof 21" / 53cm long / T5	None	240m²	480m²	42 x 65 x 18cm	12kg
Titan® 300	50 Watt	3800V 9mA	2 x 15 Watt shatterproof 18" / 45cm long / T8	2 x FS22 or S2	90m²	180m²	33 x 49.5 x 13.5cm	7.5kg
Titan® Alpha	60 Watt	3800V 9mA	2 x 15 Watt 12" / 30cm long / T5	2 x FS22 or S2	80m²	160m²	30.5 x 35 x 15cm	4kg

## DECORATIVE STICKY TRAPS

	Power Consumption	Tube Data - PestWest Quantum® BL	Starters (in series type)	Coverage area Wall mounted	Coverage area Freestanding	Dimensions H x W x D	Weight
Sunburst®	22 Watt	1 x 20 Watt BL compact	None	35m²	35m²	31 x 23 x 10cm	2.5kg
Naturale	22 Watt	1 x 20 Watt BL compact	None	35m²	35m²	32.5 x 25.5 x 11.5cm	2kg
Sunburst® Tab	25 Watt	1 x 24 Watt BL compact	None	50m²	50m² (Ceiling-suspended)	25.5 x 42.5 x 10cm	1.2kg

## SPECIALIST RANGE

	Power Consumption	Killing grid output	Tube Data - PestWest Quantum® BL	Starters (in series type)	Coverage area Wall mounted	Coverage area Ceiling-suspended	Dimensions H x W x D	Weight
Chameleon® EXG	45 Watt	n/a	2 x 18 Watt shatterproof 24" / 60cm long / T8	None	120m²	n/a	80 x 90 x 30cm	14.5kg
Chameleon® 4x4EX	190 Watt	n/a	4 x 40 Watt shatterproof 24" / 60cm long / T12	None	n/a	440m²	61.5 x 63.5 x 16.5cm	15.5kg
Chameleon® 4x4 White	190 Watt	n/a	4 x 40 Watt shatterproof 24" / 60cm long / T12	None	n/a	440m²	61.5 x 63.5 x 16.5cm	11.75kg
Nemesis® Quattro IP	66 Watt	4300V 6.5mA	4 x 14 Watt shatterproof 21" / 53cm long / T5	None	240m²	480m²	42 x 65 x 18cm	12kg
Chameleon® 1x2IP	45 Watt	n/a	2 x 15 Watt shatterproof 18" / 45cm long / T8	2 x FS22 or S2	90m²	n/a	31 x 50 x 10cm	6.1kg

# How to choose the right fly killer

## FRONT OF HOUSE

Front of house installations are typically in restaurants, bars, cafés and hotel lobbies. For front of house areas the requirements are usually for aesthetically pleasing designs that blend with the décor and are silent in operation. For these installations sticky board traps designed as wall sconces or uplighters are an ideal choice.

## COMMERCIAL

Commercial installations are usually small, medium and large retailers and kitchens. They are often places where food is being prepared or where open food is displayed. For hygiene and aesthetic reasons stainless steel construction is often specified. These demanding areas usually require large and powerful fly killers. Many installations are in public view so the design may still require aesthetically pleasing machines. Often a mixture of units that look like commercial equipment and units with discretion covers fitted are used.

## INDUSTRIAL

Industrial installations are usually factories and warehouses with large areas that need to be protected. Industrial fly killers are typically quite large and powerful industrial-looking units. These units can offer protection for areas up to 500m<sup>2</sup> with just one unit.

For a PestWest solution to all your flying insect control needs, refer to the model selection guide below.



	Titan Alpha	Titan 300	Nemesis Quattro	Nemesis Quattro IP	Uplight	Sunburst / Naturale	Sunburst Tab	Cham Sirius	On Top Pro	Cham 1x2	Cham 1x2 Discretion	Cham 1x2 IP	Cham 2x2	Cham Vega	Cham 4x4	Cham 4x4 EX	Cham EXG
Front of House					✓	✓	✓	✓	✓		✓			✓			
Commercial	✓	✓	✓				✓			✓	✓	✓	✓	✓			
Industrial			✓	✓						✓		✓	✓	✓	✓	✓	✓
Dry and Clean	✓	✓	✓		✓	✓	✓	✓	✓	✓	✓		✓	✓	✓		
Damp, steam-cleaned, hosed down				✓								✓				✓	✓
Risk of explosion (ATEX)																✓	✓
Shatterproof Tubes		✓	✓	✓	✓			✓	✓	✓	✓	✓	✓	✓	✓	✓	✓
Wall Mounting	✓	✓	✓	✓	✓	✓	✓	✓	✓	✓	✓	✓		✓			✓
Ceiling Suspension	✓	✓	✓	✓			✓		✓				✓		✓	✓	
Free Standing	✓	✓	✓			✓				✓	✓						
Area of Coverage m <sup>2</sup>	160/80	180/90	480/240	480/240	40	35	50	60	50	90	70	90	180	150	440	440	120
Electronic Ballast			✓	✓		✓	✓	✓	✓					✓	✓	✓	✓
CE mark	✓	✓	✓	✓	✓	✓	✓	✓	✓	✓	✓	✓	✓	✓	✓	✓	✓
EN 60335-2-59 & 60335-1	✓	✓	✓	✓	✓	✓	✓	✓	✓	✓	✓	✓	✓	✓	✓	✓	✓
Sticky Board Fly Trap					✓	✓	✓	✓	✓	✓	✓	✓	✓	✓	✓	✓	✓
Electronic Fly Killer	✓	✓	✓	✓													

N.B.: the stainless steel versions of the Titan 300, Chameleon 1x2, 2x2 & Vega are suitable for areas with moderate levels of humidity and corrosive substances.



Lesser Housefly  
*Fannia canicularis*

**Features**  
Grey thorax with three indistinct longitudinal stripes. Abdomen has extensive area of yellow at base.

**Control**  
PestWest sticky traps and fly killers are effective at controlling the lesser housefly.

5-6mm



Mosquitoes  
*Culex spp.*

**Features**  
Slender, long-legged insect with forward-pointing, piercing and sucking mouthparts. Wingspan 7-15mm.

**Control**  
PestWest units can be effective at catching mosquitoes.

7-15mm



Blowfly  
*Calliphora spp.*

**Features**  
Thorax and abdomen black/blue in colour and often with a metallic appearance. Wingspan 18-20mm.

**Control**  
All PestWest fly killers are a very effective step in controlling these pests.

9-13mm



Wasp  
*Vespula spp.*

**Features**  
Black head and thorax, black and yellow patterning on abdomen.

**Control**  
PestWest sticky traps and electronic fly killers are particularly effective at attracting and controlling wasps.

15-20mm



Cluster Fly  
*Pollenia rudis*

**Features**  
Large flies, wingspan up to 20mm. Thorax distinctive dark grey/olive colour covered in golden hairs.

**Control**  
Areas where flies congregate should be treated with residual insecticide. PestWest fly killers are a very effective step in controlling cluster flies.

10mm



Scuttle Fly/Phorid Fly  
*Megaselia spp.*

**Features**  
Thorax dark brown/tan with distinctive humped appearance.

**Control**  
Chameleon® sticky traps and electronic fly killers are extremely effective at attracting and controlling these pests.

3-4mm



Mushroom/Fungus Fly  
*Sciara thomae*

**Features**  
Small insects, wingspan 14-15mm. Black head, thorax and abdomen. Thorax has humped appearance.

**Control**  
Chameleon® sticky traps are a very effective step in controlling mushroom flies.

5-6mm

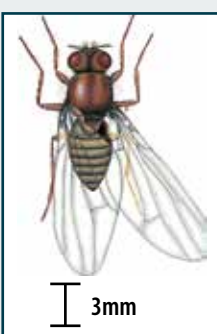


Biting Midge  
*Culicoides spp.*

**Features**  
Dark brown/black in colour. Wingspan 3-4mm. Will swarm in large numbers and inflict bites.

**Control**  
Insect repellents should be used when outdoors to prevent bites. Chameleon® sticky traps will attract and control midges.

1.2-1.5mm



Fruit Fly  
*Drosophila spp.*

**Features**  
Small yellowish brown with darkly striped abdomen. Prominent red eyes.

**Control**  
Chameleon® sticky traps are extremely effective at controlling these smaller insects.

3mm



Common Housefly  
*Musca domestica*

**Features**  
Thorax grey with four longitudinal dark stripes. Sides of abdomen are yellowish and may be transparent. A dark band covers the final abdomen segments.

**Control**  
PestWest fly killers and sticky traps will effectively control houseflies.

6-8mm



Distributed by:

**Pest Patrol**  
**086-1727888**

